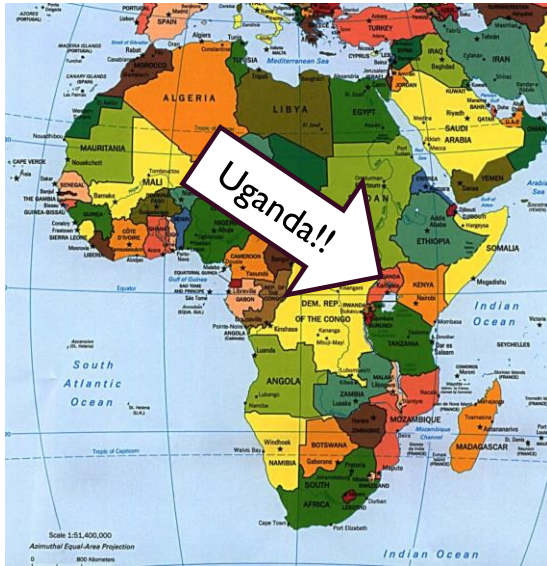




# INNOVATIVE MEDICINE IN UGANDA

ERIKA SEEHAFFER • KAYLA  
MORRIS

# WHERE IS UGANDA?





# WHAT IS KIHEFO?

- A non profit non governmental organization
- Founded by Dr. Geoffrey Anguyo in 2001
- A group of clinics including:
  - A general clinic
  - Dental clinic
  - HIV/AIDS clinic
  - Nutrition Rehabilitation center
  - Maternal/children clinic
- Other programs include:
  - Orphan and vulnerable children care
  - Rabbit project
  - Outreach clinics

# KIHEFO'S MISSION

KIHEFO believes that poverty, disease, and ignorance are interconnected, and therefore, must all be addressed to break the cycle. Based on this philosophy, KIHEFO pursues a holistic and participatory approach to community development. Using a bottom-up approach, individual people and village groups are given the necessary care, resources and tools to become healthy, productive community members.

Goal of the foundation:

- To educate and empower people to take control over their own lives in a way that is positive, healthy, and economically productive
- To work in partnership with local, national and international programs, communities, institutions, and individuals to build mutually beneficial relationships to sustain the foundation

# “WHY WOULD YOU GO TO UGANDA?”



Bless the rains down in africaaaaaaw





## GLASS REMOVAL

- Lack of resources
  - Use of hand sanitizer
  - Lidocaine
  - Surgical equipment
  - Gauze/cotton swabs
- Clinical officers

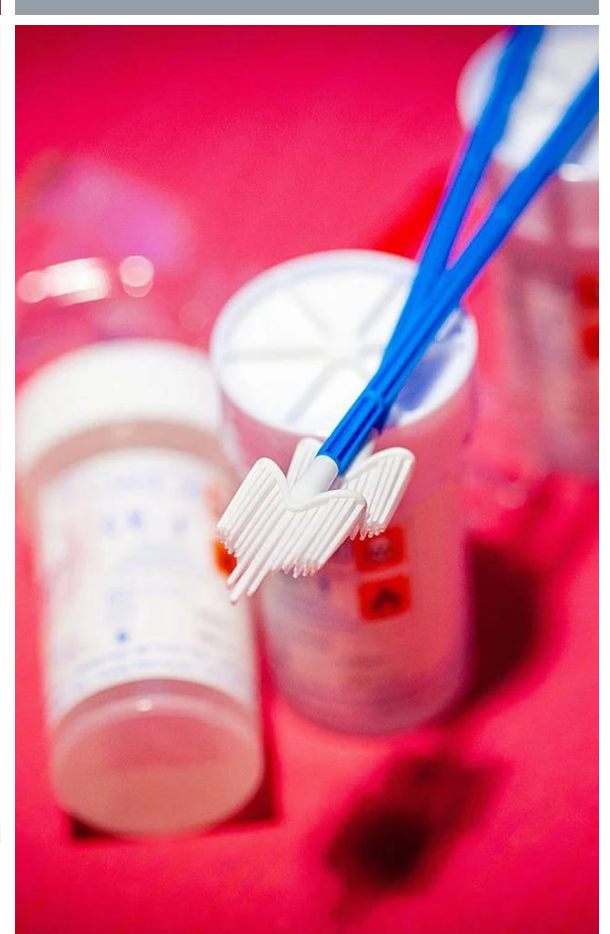
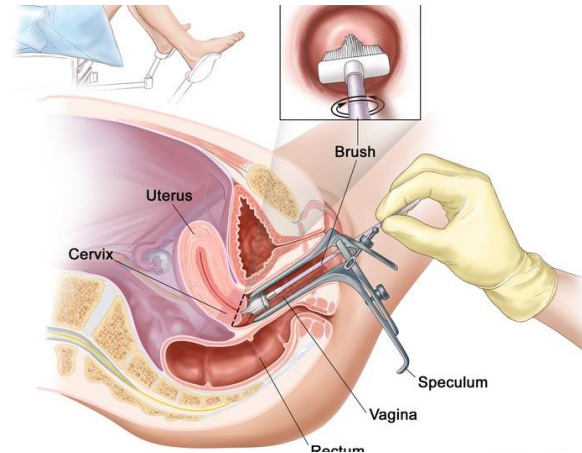
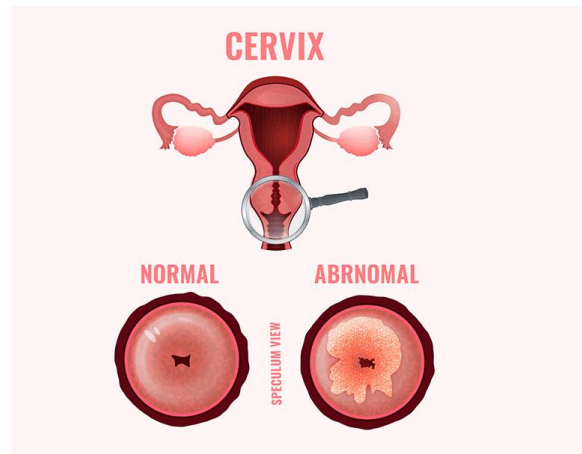


# PAP SMEAR

- Assess cells from the cervix, checking for abnormalities that can develop into cancer
- Cervical Cancer is the 4th leading cause of death by cancer and 4th cause of cancer worldwide
- Women 21-65 should receive a pap smear every 3 years

## THE ISSUE?

- ❓ IT'S EXPENSIVE
- ❓ IT TAKES TIME TO SMEAR AND INTERPRET



# 'PAP SMEAR' ALTERNATIVE



NEGATIVE



POSITIVE



- Cost Effective
- Easy to use
- Visual changes are immediate
- “See and Treat”
  - Preferred treatment is Cryotherapy
- Sensitivity to detect high-grade precancerous lesions ranges from 66–96 % (median 84%)
- Median age of diagnosis: 43
- 5 year survival rate: 18%
  - Due to late diagnosis, lack of resources

# TRADITIONAL HEALER

- The traditional healer is 75, and took over healer when his father passed away
- He uses premade herb mixes which treat a variety of medical things: Arthritis, hiccups, bloody noses, allergies, menstrual regulation, malnutrition.
- Some herbs treat other conditions: prevent poison, bad luck, man power, woman power, love potions.
- He also mixes the premade mixes for additional issues
- He heals all, no matter the payment or lack of payment. Payments include: Money, food, children and wives.



# FUTURE WITH CARROLL AND KIHEFO

- Fundraisers
  - Coin Drive
  - Toothbrushes
- Future trips
  - Money supports community outreach clinics
- Why should you go?
  - Learn!!
  - Experience!!
  - Support KIHEFO

